



Jonathan Green
QUALITY LAWN CARE SINCE 1881

Great Lawns Start Here

Superior Lawn Care is
Now Available
From Coast-to-Coast
*at Independent Garden Centers and
Hardware Stores*



2024

RETAIL CATALOG
LAWN & SOIL CARE



» ABOUT US

OUR FAMILY

- Six generation business. 4
- Experience the difference. 5

SOLD NATIONWIDE

NOW FROM COAST TO COAST

- Where to find our products. 10
- Plan-o-grams 6
- How to become a dealer. 10

NEW PRODUCTS

- Black Beauty Patcher 8
- Black Beauty Rocky Mtn 9
- Black Beauty Pacific NW 9
- Natural Grub & Insect Control 37

NEW WEBSITE

- Launching our new retail website in fall of 2023. 10
- Redesigned to quickly find information and drive more sales to your store. 10

TRAINING & ADVERTISING

- Lawn Care Academy videos 11
- Advertising resources 11

TIPS FROM A SOD GROWER

- A sod growers perspective on why healthy soil is the key to a great lawn. 12

SECRET TO HEALTHY SOIL

- Why soil pH is important? 14
- How to turn poor soil into topsoil. 15
- What makes the stomach and soil similar? 15

BLACK BEAUTY DIFFERENCE

- Discover the decades of research that has gone into making Black Beauty a darker green, more drought resistant, and overall superior grass seed. 16



CONTENTS

» GRASS SEED 18.

BLACK BEAUTY	19
Grass seed	19
Bare spot repairs	22
Regional mixtures	24

SPECIALTY GRASSES	26
Additional varieties	26
Specialty mixtures	27

SOIL FOODS 28.

COMPACTED SOIL	28
Love Your Soil	29

COMBO PRODUCT	29
Mag-I-Cal Plus Acidic Soil	29
Mag-I-Cal Plus Alkaline Soil	29

pH REPAIR	30
Mag-I-Cal	30
pH soil testers	30

LAWN FOODS 32.

VERI-GREEN FERTILIZERS	32
Fertilizer + weed controls	33
Seasonal fertilizers	33
Seeding fertilizer	34

ANNUAL LAWN & SOIL PROGRAM	35
---------------------------------------	----

ORGANICS 36.

Lawn fertilizer	37
Weed preventer	37
Grub and insect control	37

CONTROLS 38.

Weed controls	39
Fungus control	39
Moss control	39

SPREADERS 40.

Rotary spreaders	41
Hand spreader	41

FABRICS 42.

Landscape fabric & staples	42
----------------------------	----

ICE MELT 43.

Ice melter, pellets & rock salt	43
---------------------------------	----

Our Story

140 Years of Quality

1881

INSPIRING BEGINNINGS
Jonathan Green experiments with turfgrass varieties to improve the surface of bowling greens in England.

1906

BRINGING IN FAMILY
Jonathan Green's grandson Jack starts working with his grandfather to construct higher quality bowling greens.

1957

MAKING IT OFFICIAL
Jack Green and his son Barry establish the Jonathan Green Grass Seed Company in Kearny, New Jersey—named in honor of Jack's grandfather—the original turfgrass professional.

1961

HONORING OUR ROOTS
The business begins using the cameo of Jonathan Green in the company logo.

1961

EXPANDING INTO SOD
Jonathan Green begins selling to sod growers, improving our seed mixtures to meet professional standards.

1981

SUPPORTING INDEPENDENTS
Jonathan Green transitions from selling supermarkets to independent garden centers and hardware stores. A commitment was made to never sell to big box chain stores.

1985

GOING BEYOND SEED
1985: Jonathan Green expands the business offerings outside of grass seed and introduces lawn fertilizer.
1988: Jonathan Green goes green and launches their very first line of organic lawn care products.

1986

CULTIVATING SUPERIOR SEED
Jonathan Green establishes a turfgrass research and production company named Cascade International Seed in Oregon to breed improved turfgrasses.

1993

INTRODUCING BLACK BEAUTY
Jonathan Green develops Black Beauty Grass Seed, the first-ever tall fescue plant that truly rivals the dark color and texture of Kentucky Bluegrass.

2008

EXPANDING INTO THE CO-OPS
Jonathan Green begins selling to Ace, Do-It-Best and True Value.

2010

BECOMING 6 GENERATIONS
The daughters of the owners join the company on the sales and marketing teams.

2021

EXPANDING TO THE WEST COAST
Jonathan Green is now available from Coast-to-Coast.



Experience The Difference

Our family has been helping to grow great looking lawns for more than a century.

Welcome to Jonathan Green. We are a family owned and operated business; we take great pride in our products and the relationships we have with our customers.

Jonathan Green sells only premium-quality grass seed, soil foods, and fertilizers to ensure that your customers achieve noticeably better results on their own lawn. By making their work easier and delivering impressive lawns, we are turning the lawn into a green space to be enjoyed with family and friends.



Used by professionals

Jonathan Green products are trusted by turfgrass professionals, such as sod growers, so you know that they grow great lawns.



Only sold by independents

Sold exclusively at independent Garden Centers and Hardware Stores. There is no big-box store competition.



Stocked across the nation

Stocked in the warehouses of every major Co-Op and L&G Distributor in the USA.



Homeowner satisfaction

Satisfied lawn customers mean repeat business for your store.

FIND OUR PRODUCTS ACROSS THE USA



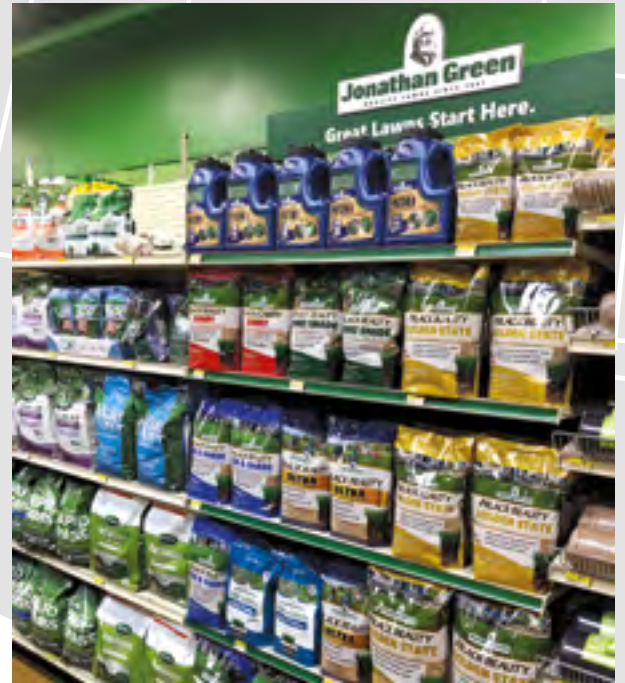
Great Lakes Ace
MI *soil testing kiosk



Tilley's Nursery
PA *lawn & soil center



Rommel's Home Center
DE * 8' plan-o-gram



Outdoor Supply Hardware
CA * 4' plan-o-gram



Lemoi Ace Hardware
IL * 8' plan-o-gram



Costellos Ace Hardware
NY * grand opening



BOOST STORE AESTHETICS

Improve your grass seed display by requesting plan-o-grams, regional-specific banners, Lawn Care Guide holders, and more via our new online 'Request POP' form.

Great Lawns And Repeat Customers



From Coast to Coast

Jonathan Green lawn products are now stocked by all the major hardware, co-op and garden center distributing companies from coast to coast. Contact one of our distributors, or call us directly at 1-800-526-2303, and become a Jonathan Green Authorized Retailer today.

Jonathan Green lawn products make an attractive, eye-catching display. The bags are colorful and have easy-to-understand selling points which highlight the features and benefits of each product. This will help to ensure that your customers have success when using Jonathan Green grass seed, soil food, fertilizer, and control products at home.

Jonathan Green offers regional grass seed plan-o-grams in 2-ft, 4-ft, 8-ft, and 12-ft displays. We also provide free point-of-purchase shelf talkers, signs, banners and Lawn Care Guides. Ask your distributor salesperson for photos of the POGs.

New Products In 2024



Stacker Boxes

Designed specifically to display our 3 pound bags of regional grass seed mixtures

Grass Seed Mixture	Region	Case Pack	Product Code	See Page
Keystone	PA	6 x 3 lb.	10359	24
Delmarva	DE, MD, VA	6 x 3 lb.	10394	24
Golden State	CA	6 x 3 lb.	10702	24
Pacific Northwest	ID, OR, WA	6 x 3 lb.	10364	25
Rocky Mountain	CO, MT, UT, WY	6 x 3 lb.	10382	25

see pages 24 - 25



Black Beauty® Patcher

Contains Black Beauty Ultra Grass Seed and Starter Fertilizer

Repairs bare spots in 14 days

Coir Mulch expands for great seed-to-soil contact

see page 22



Corn Gluten Weed Preventer plus lawn food

Safe for kids and pets

Prevents crabgrass, dandelions and over 25 other weeds

Feeds the lawn (10-0-2)

see page 37



Black Beauty® Pacific Northwest

Formulated for the diverse climates of the Pacific Northwest

Produces a dark-green lawn

For sunny and shady areas

see page 25



Black Beauty® Rocky Mountain

Formulated for the high altitudes of the Rockies

Produces a dark-green lawn

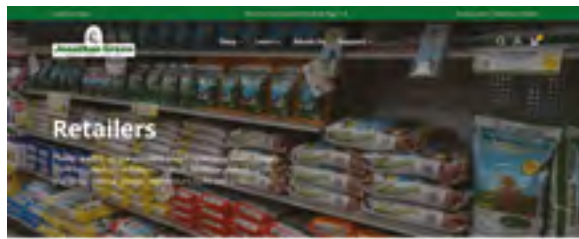
For sunny and shady areas

see page 25

Improved Retail Website Coming Soon

Supercharge Your Retail Experience

- » Boost store aesthetics with ease
- » Connect directly with your sales rep
- » Discover our revamped store locator
- » Streamlined relabel requests



Why Choose Jonathan Green?

Jonathan Green is a 4th generation family business deeply committed to the health and well-being of your family, helping you to grow and maintain the most beautiful lawn.

- Quality Products**
Jonathan Green is a 4th generation family business deeply committed to the health and well-being of your family, helping you to grow and maintain the most beautiful lawn.
- Independent Exclusive**
Jonathan Green is a 4th generation family business deeply committed to the health and well-being of your family, helping you to grow and maintain the most beautiful lawn.
- Sold Nationwide**
Jonathan Green is a 4th generation family business deeply committed to the health and well-being of your family, helping you to grow and maintain the most beautiful lawn.

"We love carrying Jonathan Green products and cant keep it on the shelves!"

John Doe
Retailer Name

Some of our Top Retail Stores

Jonathan Green is a 4th generation family business deeply committed to the health and well-being of your family, helping you to grow and maintain the most beautiful lawn.

Helpful Links

- Become a Retailer**
Learn everything you need to know about becoming a Jonathan Green retailer.
[LEARN MORE](#)
- Find a Distributor**
Find a distributor to help you get started with Jonathan Green products.
[VIEW ALL](#)
- Grass Seed Retailers**
Learn about our grass seed products and how to find a retailer.
[LEARN MORE](#)
- Store Locator**
Find a store near you to purchase Jonathan Green products.
[VIEW STORES](#)
- Retail Catalog**
Browse our retail catalog to see all the products we have to offer.
[VIEW CATALOG](#)
- Request POP Materials**
Request POP materials for your store to help you promote Jonathan Green.
[LEARN MORE](#)

Store Locator

Find a store near you to purchase Jonathan Green products.

Map Key: Active Retailer Inactive Retailer

Filter by:

Retailers...

View all retailers

Join Our Newsletter

Sign up for our newsletter to receive the latest news and offers.

Jonathan Green

Local Retailer and distributor of Jonathan Green products. Visit us at [jonathangreen.com](#)

- Home
- Products
- Services
- Support
- Partners
- Company
- Privacy Policy
- Terms of Service
- Contact Us

Request a Call From a Salesman

Get a free quote and learn more about Jonathan Green products and services.

[Request a Call](#)

Co-Op Advertising Site

Visit our co-op advertising site to use our assets and quickly launch your retailer advertising campaign.

[View Site](#)

Train Your Team Lawn Academy

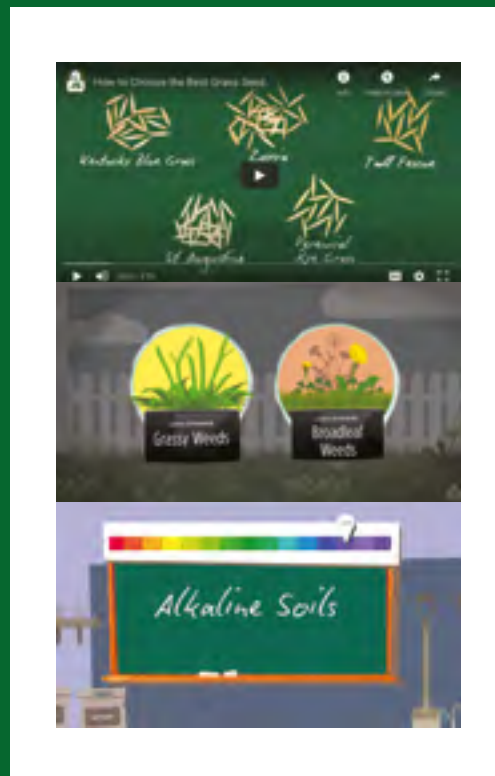
Expert training videos at your fingertips:

Watch concise 2-minute Training Academy videos, enlightening your team about lawn care essentials and the unique selling propositions of Jonathan Green products.

» 6 EDUCATIONAL VIDEOS COVERING THE ESSENTIALS NEEDED TO PROPERLY CARE FOR YOUR LAWN.

- | | |
|-----------------------------------|------------------------------|
| 1. Selecting the right grass seed | 4. Correcting acidic soils |
| 2. Control lawn weeds | 5. Correcting alkaline soils |
| 3. All about lawn fertilizers | 6. Reducing soil compaction |

WWW.JONATHANGREEN.COM/ACADEMY



Advertising Resources Digital & Print

Ready-made advertising content for retailers

- | | |
|---------------------------------------|----------------------------|
| » Ad fund rules/
procedures | Press-ready ads |
| Approved logos | Digital advertising |
| Product sell sheets | » Facebook & Instagram ads |
| Seed relabel forms | Youtube ads |
| Videos & radio scripts | Influencer campaigns |
| UPC barcodes | Display & native ads |
| Updated images for
print & digital | Digital circulars |
| | Streaming audio |



WWW.JONATHANGREENADS.COM

**All ads must use the most current images on the site and must get pre-approved by a JG Sales Rep.*



Why Healthy Soil? The Sod Grower Perspective

Jonathan Green has been an important supplier to professional sod growers for 65 years. We sell Black Beauty and Blue Panther grass seed mixtures to sod growers in all the states where cool season grasses are grown.

To maximize yield, and turn of inventory, sod growers have learned the benefits that are derived from healthy soil. Sod growers are the only turfgrass professionals who start with a “blank slate” of ground in which to grow and harvest a crop of sod annually.

Normally, the planting of fields takes place in early fall with hopes to be able to harvest the sod by late spring of the next year. When this occurs growers turn their land and their sod inventory efficiently. If they can't harvest within one year, they bear the extra costs of mowing, fertilization, weed and pest control for an additional year. This means their profit will be significantly reduced. **Healthy soil plays a large part in how sod growers continuously deliver great lawns year after year.**

Sod Grower Tip #1: Good soil supports grass plant life and poor soil does not.

Sod Growers apply a rich carbon source to their fields every year in order to convert soils that contain sand or heavy clay into rich topsoil. By increasing the organic content in the soil, the microbes convert it into mineral-rich humus. **Soil microbes help provide vital nutrition to the grass roots. This process also helps to improve the plant's resistance to disease, fungus and drought.**

The details: During the conversion process the microbes make the soil more porous, increase oxygen levels and alleviate compaction. **If the organic content in soil becomes too low the microbes start to disappear and the soil re-compacts** – meaning air, water and nutrients won't flow deep enough to allow for proper root growth or plant consumption. **It is only with healthy soil microbial life that the nutrients from fertilizers are able to be accessed by the grass plants.**

At home solution: Apply a rich carbon source like *Love Your Soil* or *Mag-I-Cal Plus* to the lawn at least once every year.

Sod Grower Tip #2: Maintaining a soil pH between 6.2 to 7.0. It is essential for growing great grass.

The second obstacle to growing great sod is having the right pH. Lawn grass flourishes in a slightly acidic to neutral pH (ranging from 6.2 to 7.0 on the pH scale). **When pH falls outside this range, nutrients become locked-up in the soil, and are not readily available to grass plants.**

A proper soil pH will allow 100% of the fertilizer you apply to be consumed by the grass plant; **while an imbalanced soil pH could waste approximately 50% of the fertilizer applied because the grass roots cannot absorb it.**

The details: Small changes in pH level can mean big changes for the lawn. The pH scale is logarithmic, meaning a pH reading of 5 is 10x more acidic than a pH reading of 6 and 100x more acidic than a pH of 7, and so on.

At home solution: Apply *Mag-I-Cal Plus for Acidic & Hard Soil* for lawns with low pH, and *Mag-I-Cal Plus for Lawns in Alkaline & Hard Soil* for lawns with high pH.

» Plant nutrient availability is strongly tied to the pH

» Half of fertilizer is lost when soil pH is imbalanced

» Adding organic content increases microbial life

» Need active microbes and a balanced pH for nutrients to be absorbed by grass plants



Why soil pH is important acidic vs alkaline

Having the correct soil pH is critically important to healthy turfgrass growth. In acidic soils (low pH), hydrogen (H⁺) ions bond strongly to exchange sites in the soil, which hold the mineral nutrients. Conversely, when too many alkaline elements, like calcium (Ca⁺⁺), magnesium (Mg⁺), and sodium (Na⁺), dominate exchange sites in the soil, they cause excessive alkalinity (high pH). Soil pH is measured on a pH scale, which is shown above. When the soil is too acidic or too alkaline, the exchange sites become “clogged” with the tightly bound elements above, and fertilizer nutrients can’t bind to them. If these bonds aren’t broken, then fertilizer becomes unused and often leaches into groundwater. Some studies show that 20% to 70% of lawn fertilizer is wasted when soil pH is imbalanced.

Mag-I-Cal Plus for Acidic & Hard Soil rapidly releases acidic elements from exchange sites, allowing fertilizer nutrients to take their place and be properly broken down for grass roots to absorb. Similarly, Mag-I-Cal Plus for Alkaline and Hard Soil removes alkaline elements from exchange sites, enabling the nutrients from lawn fertilizer to effectively take a seat on the exchange sites and be used by grass plants. Both Mag-I-Cal Plus products also loosen hard soil to increase air flow, porosity, and root growth.

Stop wasting your lawn fertilizer! Start improving your soil today by using Mag-I-Cal Plus immediately before fertilizing lawns. Yes, you may say that Mag-I-Cal plus is the “primer” for your fertilizer.



Watch our
Acidic Soil
Video

How to turn poor soil into topsoil

A pool was dug in central New Jersey. The soil base was sand mixed with heavy clay. **Love-Your-Soil** was used twice a year for four years prior to the pool excavation. Look at the difference! You can see that Love Your Soil created nearly 20" of topsoil. Start building healthy topsoil now by adding our "bio-boosting" **Love Your Soil** into your lawn care programs.



Video: Soil Compaction

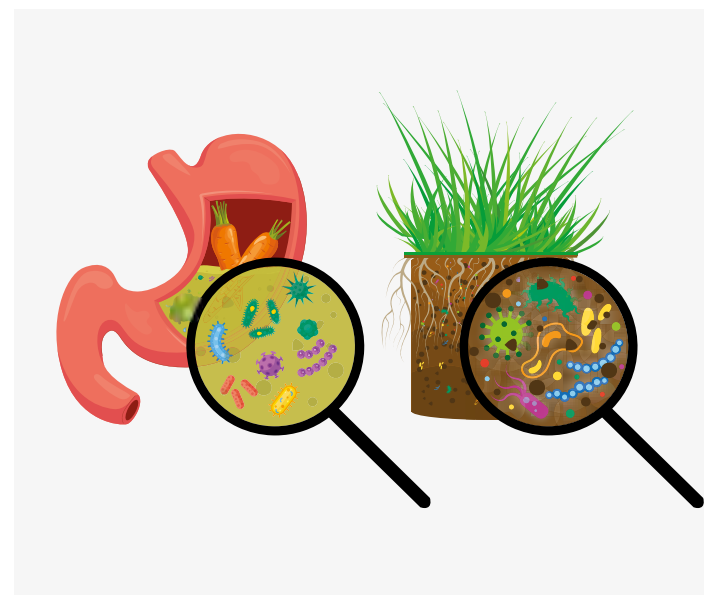


What makes the stomach and soil similar?

Hint: It's how both absorb nutrients

The human digestive system breaks down larger food molecules using acids and enzymes into smaller molecules that are absorbed by the bloodstream to nourish the body.

In the soil, bacteria and fungi, also using acids and enzymes decompose the organic and mineral content in the soil. The larger food molecules are converted into smaller molecules which are transported via an enriched soil water solution to the grass roots as nourishment.





> Black Beauty variety on the research farm

Black Beauty

know the difference

The Black Beauty grass seed mixtures shown in this catalog represent the culmination of decades of research, evaluation and production. This process involves the best grass plant breeders, researchers and grass seed farmers. Less than 1% of the turf-grasses we screen end up being worthy of the Black Beauty name.

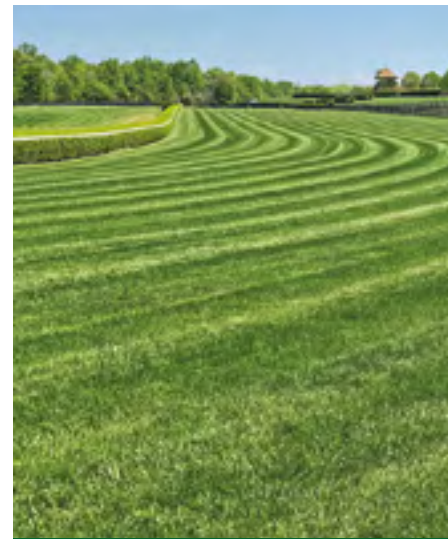
Black Beauty grass seed is known for having a naturally dark-green color, uniform texture, and a waxy leaf coating to preserve moisture. They also contain naturally occurring endophytes which provide insect and disease resistance. With roots up to 4-feet deep, Black Beauty mixtures are very drought tolerant and will save money on water bills. Whether starting from scratch, or overseeding, Black Beauty grass seed mixtures have the ability to improve any lawn.

Before becoming available for retailers to sell, Black Beauty was grown and tested by sod growers on sod farms across America for many years. The feedback we received from these turfgrass professionals convinced us that we had to increase our seed production to offer these special seed mixtures to our loyal independent retailers and their customers.

Black Beauty seed mixtures are only sold at independent garden centers and hardware stores, so you'll never compete for grass seed sales with the big-box discounters. We have been breeding and improving turfgrass varieties for over fifty years in order to create exceptional turfgrass mixtures that will shine in your store and on your customers lawns.



> Infante Sod Farm – BB grass roots



> Black Beauty used at Queens Cup



> Black Beauty homeowner – MD



> AG Sod Farm CA – BB sod in dry climate



> Johnson Sod Farm NJ – freshly cut Black Beauty sod



> Steeplechase track – NC



> BB golf course roughs – Chicago



> Black Beauty soccer field – RI



> Black Beauty lawn – IL



> Lawn seeded with Black Beauty Ultra grass seed – NJ

Black Beauty Grass Seed Collection

- »» Roots up to 4' deep
- »» Waxy leaf coating locks-in moisture
- »» Incredible drought & disease resistance
- »» Upright uniform growth habit
- »» Naturally insect resistant





- 30% Future Tall Fescue
- 30% Golconda Tall Fescue
- 20% Toltec Tall Fescue
- 10% Pivot Kentucky Bluegrass
- 10% Frontier Perennial Ryegrass

Black Beauty® Ultra

Our best and newest Black Beauty, Kentucky bluegrass and perennial ryegrass varieties

Excellent heat tolerance

Used by nation's leading sod growers

Coverage (sq. ft.)	JG SKU	Weight (lbs)	Case Pack	Cases per Pallet	MSRP
400	10320	1	24	40	\$7.99
1,200	10321	3	15	21	\$19.99
2,800	10322	7	7	21	\$44.99
10,000	10323	25	1	40	\$129.99
20,000	10324	50	1	20	\$234.99



- 50% Golconda Tall Fescue
- 25% Future Tall Fescue
- 25% Toltec Tall Fescue

Black Beauty® Original

Perfect for overseeding into any existing lawn – sun or shade

Used by leading sod growers across the USA

Coverage (sq. ft.)	JG SKU	Weight (lbs)	Case Pack	Cases per Pallet	MSRP
1,500	10318	5	10	21	\$24.99
4,500	10317	15	3	21	\$74.99
7,500	10315	25	1	40	\$129.99
15,000	10316	50	1	20	\$234.99



- 30% Golconda Tall Fescue
- 30% Toltec Tall Fescue
- 15% Deepblue Kentucky Bluegrass
- 15% Hood Chewings Fescue
- 10% Frontier Perennial Ryegrass

Black Beauty® Sun & Shade

Our best-selling grass seed mixture

Adaptable Black Beauty varieties that grow well in sunny or shady lawn conditions

Coverage (sq. ft.)	JG SKU	Weight (lbs)	Case Pack	Cases per Pallet	MSRP
750	12001	1	24	40	\$7.99
2,250	12002	3	15	21	\$19.99
5,250	12005	7	7	21	\$44.99
11,250	12004	15	3	21	\$79.99
18,750	12006	25	1	40	\$129.99
37,500	12007	50	1	20	\$234.99

Black Beauty® Dense Shade

Shade-tolerant for a lawn that grows well in tree-lined areas

Grows in spots with limited sunlight

Coverage (sq. ft.)	JG SKU	Weight (lbs)	Case Pack	Cases per Pallet	MSRP
600	10622	1	24	40	\$7.99
1,800	10600	3	15	21	\$19.99
4,200	10620	7	7	21	\$44.99
15,000	10610	25	1	40	\$129.99



- 25% Golconda Tall Fescue
- 25% Toltec Tall Fescue
- 15% Hood Chewings Fescue
- 15% Eugene Creeping Red Fescue
- 10% Deepblue Kentucky Bluegrass
- 10% Frontier Perennial Ryegrass

Black Beauty® Fall Magic

Specially formulated for fall seeding

Repair summer damage

For use in sun and shade

Coverage (sq. ft.)	JG SKU	Weight (lbs)	Case Pack	Cases per Pallet	MSRP
1,500	10765	3	15	21	\$19.99
3,500	10768	7	7	21	\$44.99
12,500	10770	25	1	40	\$129.99



- 30% Golconda Tall Fescue
- 30% Toltec Tall Fescue
- 10% Frontier Perennial Ryegrass
- 10% Hood Chewings Fescue
- 10% Eugene Creeping Red Fescue
- 10% Deepblue Kentucky Bluegrass

Black Beauty® Heat & Drought

Contains Tall Fescue and Texas Bluegrass that withstands heat up to 100°F

The ultimate heat/drought mixture

Can be used as far south as northern TX, which includes much of CA

Coverage (sq. ft.)	JG SKU	Weight (lbs)	Case Pack	Cases per Pallet	MSRP
1,500	10514	3	15	21	\$19.99
3,500	10515	7	7	21	\$44.99



- 30% Golconda Tall Fescue
- 30% Toltec Tall Fescue
- 30% Future Tall Fescue
- 10% Blue Gem Texas Hybrid Bluegrass



45% Golconda Tall Fescue
40% Toltec Tall Fescue
15% Frontier Perennial Ryegrass

Black Beauty® Heavy Traffic

Best varieties for “wear and tear” areas

Use in sunny or shady areas where children and pets play

Coverage (sq. ft.)	JG SKU	Weight (lbs)	Case Pack	Cases per Pallet	MSRP
1,200	10970	3	15	21	\$19.99
2,800	11000	7	7	21	\$44.99
10,000	10980	25	1	40	\$129.99



35% Golconda Tall Fescue
35% Toltec Tall Fescue
10% Frontier Perennial Ryegrass
10% Harpoon Hard Fescue
10% Eugene Creeping Red Fescue

Black Beauty® Shady Nooks

Survives in shady areas, wet or dry

For areas of the lawn with medium to extreme dense shade

Coverage (sq. ft.)	JG SKU	Weight (lbs)	Case Pack	Cases per Pallet	MSRP
2,250	11957	3	15	21	\$19.99
5,250	11959	7	7	21	\$44.99
18,750	11960	25	1	40	\$129.99



40% Golconda Tall Fescue
35% Toltec Tall Fescue
15% Deepblue Kentucky Bluegrass
10% High Life Perennial Ryegrass

Black Beauty® Sunny

Performs best in full sun areas

Great heat and drought resistance

Coverage (sq. ft.)	JG SKU	Weight (lbs)	Case Pack	Cases per Pallet	MSRP
850	10895	1	24	40	\$7.99
2,550	10860	3	15	21	\$19.99
5,950	10880	7	7	21	\$44.99
21,250	10870	25	1	40	\$129.99

Black Beauty bare spot repair



- » rake
- » shake
- » water

Black Beauty® Patcher Combo: Grass Seed–Fertilizer–Mulch

All-in-one solution, with starter food, to repair stubborn bare spots in lawns

Contains Black Beauty Ultra Grass Seed

Uses coir & rice hull mulch to amend soil

Coverage (sq. ft.)	JG SKU	Weight (lbs)	Case Pack	Cases per Pallet	MSRP
130 (jug)	10450	3	4	144	\$25.99
300 (bag)	10451	7	1	99	\$37.99



Toltec Tall Fescue
Montana Tall Fescue
Deep Blue Kentucky Bluegrass
Frontier Perennial Ryegrass
Coir & Rice Hull Mulch
Lawn Food (1-2-1)



- » rake
- » cut
- » water

Black Beauty® Seedroll

Contains Black Beauty Ultra Grass Seed and starter food

All-in-one seed mat ideal for bare spots and slopes

Just roll, water and grow

Coverage (sq. ft.)	JG SKU	Weight (lbs)	Case Pack	Cases per Pallet	MSRP
50	10410	3	6	24	\$29.99



- Toltec Tall Fescue
- Montana Tall Fescue
- Deep Blue Kentucky Bluegrass
- Frontier Perennial Ryegrass
- Lawn Food (Starter Fertilizer)

regional grass seed mixture

Black Beauty® Delmarva Mid-Atlantic Blend

Great for the heat and drought stressed areas of the Mid-Atlantic

Region includes Delaware, Maryland and Virginia

Coverage (sq. ft.)	JG SKU	Weight (lbs)	Case Pack	Cases per Pallet	MSRP
1,500	10394	3	6	24	\$19.99
2,150	10391	7	7	21	\$44.99
7,500	10392	25	1	40	\$129.99
15,000	10393	50	1	20	\$234.99



40% Toltec Tall Fescue
30% Golconda Tall Fescue
30% Montana Tall Fescue

Black Beauty® Golden State California Mixture

Formulated for the drought areas of CA

Grows a dark green lawn with less water

Waxy leaf coating preserves moisture.

Grows roots up to 4-feet deep

Coverage (sq. ft.)	JG SKU	Weight (lbs)	Case Pack	Cases per Pallet	MSRP
500	10769	1	12	48	\$7.99
1,500	10702	3	6	24	\$19.99
3,500	10701	7	7	21	\$44.99

*Available in CA only



30% Golconda Tall Fescue
30% Toltec Tall Fescue
30% Future Tall Fescue
10% Blue Gem Texas Hybrid
Bluegrass

Black Beauty® Keystone Pennsylvania Mixture

Specially formulated for the diverse growing conditions of PA

Naturally dark green grasses require less fertilizer

Thickens and improves any lawn

Coverage (sq. ft.)	JG SKU	Weight (lbs)	Case Pack	Cases per Pallet	MSRP
1,200	10359	3	6	24	\$19.99
2,800	10361	7	7	21	\$44.99
10,000	10362	25	1	40	\$129.99

*Available in PA only



35% Golconda Tall Fescue
35% Toltec Tall Fescue
10% Frontier Perennial Ryegrass
10% High Life Perennial Ryegrass
10% Deepblue Kentucky Bluegrass

regional grass seed mixture

Black Beauty® Pacific NW Idaho, Ore., Wash. Mixture

Formulated for the diverse climates of the Pacific Northwest

Produces a dark-green lawn

For sunny and shady areas

Coverage (sq. ft.)	JG SKU	Weight (lbs)	Case Pack	Cases per Pallet	MSRP
2,250	10364	3	6	24	\$19.99
5,250	10366	7	7	21	\$44.99



- 35% Dakota Tall Fescue
- 25% Highlife Perennial Rye
- 20% Tara Tall Fescue
- 10% Frontier Perennial Rye
- 10% Pivot Kentucky Bluegrass

Black Beauty® Rocky Mountain CO, MT, UT, WY Mixture

Formulated for the high altitudes of the Rockies

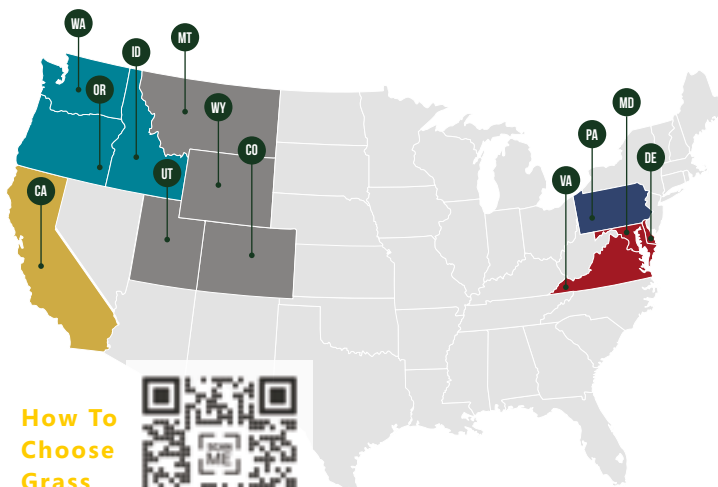
Grows a dark-green lawn with less water

For sunny and shady areas

Coverage (sq. ft.)	JG SKU	Weight (lbs)	Case Pack	Cases per Pallet	MSRP
1,500	10382	3	6	24	\$19.99
3,500	10383	7	7	21	\$44.99



- 30% Golconda Tall Fescue
- 30% Tara Tall Fescue
- 30% Frontier Perennial Rye
- 10% Pivot Bluegrass



How To Choose Grass Seed

Ask your sales representative about our

Stacker Boxes

which are ideal for setting up off-shelf displays of your Regional Black Beauty grass seed mixtures.



additional grass seed mixtures



75% Annual Ryegrass
15% Tall Fescue
10% Creeping Red Fescue

Fast Grow Grass Seed Mixture

Provides a quick, temporary cover to landscapes that will likely be changed

Coverage (sq. ft.)	JG SKU	Weight (lbs)	Case Pack	Cases per Pallet	MSRP
1,500	10820	3	15	21	\$9.99
3,500	10840	7	7	21	\$21.99
7,500	10830	15	3	21	\$44.99
12,500	10810	25	1	40	\$66.99



40% Deepblue Kentucky Bluegrass
30% Pivot Kentucky Bluegrass
20% Madison Kentucky Bluegrass
10% Krypton Kentucky Bluegrass

Blue Panther™ Kentucky Bluegrass Blend

Contains the best Kentucky bluegrass varieties being grown by top sod growers across the US

Coverage (sq. ft.)	JG SKU	Weight (lbs)	Case Pack	Cases per Pallet	MSRP
4,800	11970	3	15	21	\$24.99
40,000	11980	25	1	40	\$199.99



40% Frontier Perennial Ryegrass
30% High Life Perennial Ryegrass
30% Spirit Perennial Ryegrass

Touch-Up Tri-Rye Perennial Ryegrass Blend

Perfect for repairing bare spots or overseeding your entire lawn

A golf course quality mixture

Coverage (sq. ft.)	JG SKU	Weight (lbs)	Case Pack	Cases per Pallet	MSRP
1,500	12120	3	15	21	\$17.99
3,500	12140	7	7	21	\$39.99
12,500	12130	25	1	40	\$129.99



90% Annual Ryegrass
10% Perennial Ryegrass

Contractor's Grass Seed Mixture

Ideal for stabilization or temporary seeding

Quick germination and cover

Coverage (sq. ft.)	JG SKU	Weight (lbs)	Case Pack	Cases per Pallet	MSRP
6,500	11458	25	1	40	\$64.99
13,000	11460	50	1	20	\$114.99

specialty seed mixtures



100% White Clover

White Clover Seed

Low-growing, perennial broadleaf ground cover that has deep taproots and withstands drought

Its nitrogen-fixing abilities helps to feed lawns

Coverage (sq. ft.)	JG SKU	Weight (lbs)	Case Pack	Cases per Pallet	MSRP
1,000	12381	1	24	40	\$14.99



35% Gulf Annual Ryegrass
20% Fawn Tall Fescue
15% Tetraploid Perennial Ryegrass
10% Kentucky Bluegrass
10% Orchardgrass
5% Timothy
5% White Clover

Pasture Mixture

Endophyte-free

Ideal for paddocks

Coverage (sq. ft.)	JG SKU	Weight (lbs)	Case Pack	Cases per Pallet	MSRP
21,780	11621	25	1	40	\$119.99
43,560	11620	50	1	20	\$229.99



Over 25 Wildflowers
Hard Fescue
Birdsfoot Trefoil

Wildflowers & Meadow Grass Mixture

Over 25 types of annual and perennial wildflowers

Creates a meadow effect

Coverage (sq. ft.)	JG SKU	Weight (lbs)	Case Pack	Cases per Pallet	MSRP
1,000	12384	1	18	40	\$19.99



100% Winter Rye

Winter Rye

Cover crop for your garden to enrich the soil

Not for lawn seeding

Coverage (sq. ft.)	JG SKU	Weight (lbs)	Case Pack	Cases per Pallet	MSRP
1,200	12391	5	10	21	\$12.99
13,500	12390	56	1	20	\$44.99



Cellulose Mulch
Corn Fiber
Natural Tackifier
Lawn Food (1-0-0)

Top-Dress™ Seedling Cover & Growth Accelerator (1-0-0)

Promotes faster germination and deep rooting

Conceals grass seed from birds and prevents erosion

Coverage (sq. ft.)	JG SKU	Weight (lbs)	Case Pack	Cases per Pallet	MSRP
600-750	11031	45	1	45	\$44.99

Soil Foods Ammendment Collection

- »» Adds organic matter
- »» Neutralizes soil pH (6.2 - 7)
- »» Stimulates soil microbial life
- »» Loosens hard soils
- »» Help grass roots to access air, food & water





21% Calcium
3.8% Sulfur
1% Iron

Love Your Soil

Lawns in Hard Soil

Rapidly loosens hard, compacted soil with a special, fast-acting gypsum and molasses formula

Bio-stimulates soil life to build top soil

Coverage (sq. ft.)	JG SKU	Weight (lbs)	Case Pack	Bags per Pallet	MSRP
5,000	12190	18	na	100	\$24.99
15,000	12191	46.5	na	40	\$59.99



28% Calcium
1.5% Sulfur
.5% Iron
1% Humic Acid
1% Polyhydroxycarboxylic Acids
2% Biochar

Mag-I-Cal Plus

Lawns in Acidic & Hard Soil

A unique soil food combination product:

Rapidly **raises soil pH**

Loosens soil compaction

Stimulates microbial activity

Coverage (sq. ft.)	JG SKU	Weight (lbs)	Case Pack	Bags per Pallet	MSRP
5,000	11354	18	na	100	\$28.99
15,000	11355	54	na	40	\$59.99



18% Calcium
17% Sulfur
6% Humic Acid
1% Polyhydroxycarboxylic Acids

Mag-I-Cal Plus Alkaline

Lawns in Alkaline & Hard Soil

A unique soil food combination product:

Rapidly **lowers soil pH**

Loosens soil compaction

Stimulates microbial activity

Coverage (sq. ft.)	JG SKU	Weight (lbs)	Case Pack	Bags per Pallet	MSRP
5,000	11356	18	na	100	\$28.99
15,000	11357	54	na	40	\$59.99

Soil Foods and testers

Mag-I-Cal

Lawns in Acidic Soil

5M bag equals up to 5 bags of lime

15M bag equals up to 15 bags of lime

Use on soils with pH below 6.2

Coverage (sq. ft.)	JG SKU	Weight (lbs)	Case Pack	Bags per Pallet	MSRP
5,000	11353	18	na	100	\$19.99
15,000	11352	54	na	40	\$44.99



35% Calcium
2% Humic Acid
2% Polyhydroxycarboxylic
Acids

Pro Soil Tester

For pH & Moisture

Professional-grade quality

Accurately measures soil pH and moisture levels in just 3 minutes

Coverage (sq. ft.)	JG SKU	Weight (lbs)	Case Pack	Cases per Pallet	MSRP
na	11100	na	na	na	\$74.99



Soil pH Test Kit

Easy-to-use kit determines soil pH in 5 minutes

10 test capsules per kit

Coverage (sq. ft.)	JG SKU	Weight (lbs)	Case Pack	Cases per Pallet	MSRP
na	11595	na	12	na	\$7.99





>> Love Your Soil and Mag-I-Cal really work!

★★★★★

Review by Love Your Soil Believer

'I have to admit that I was very skeptical about Love Your Soil and Mag-I-Cal Plus but after using both products for less than one year, I'm a true believer! Like many households in NC, my clay soil was extremely compact and very hard to work with even after amending it with screened compost and peat moss. After using both products my soil appears to be less dense, I don't have puddles of standing water and my grass is deep green even during extended periods of drought. My lawn might not be picture perfect yet but I finally feel that I'm on the correct path to a much healthier soil and lawn. Thank you for making professional grade products available to home owners.'

Lawn Foods Fertilizers & Combo Collection

- » Extended greening for up to 3 months.
- » Slow release nitrogen unaffected by rainfall and temperature.
- » Superior weed control over other brands.



» Watch
Our
Fertilizer
Video





Contains Dimension® herbicide
 Derived from: Polymer Coated
 Urea, Urea, Muriate of Potash
 25% Slow-Release Nitrogen

Veri-Green Lawn Food Crabgrass Preventer

Prevents crabgrass **before** it grows
 Kills crabgrass **after** it grows up to 3rd
 leaf stage
 Feeds the lawn (20-0-3)

Coverage (sq. ft.)	JG SKU	Weight (lbs)	Case Pack	Bags per Pallet	MSRP
5,000	16000	16	na	130	\$29.99
15,000	16001	48	na	45	\$74.99

Dimension® is a registered trademark of Dow AgroSciences, LLC.



Contains Dissolve® herbicide
 Derived from: Polymer Coated
 Urea, Urea, Sulfate of Potash
 30% Slow-Release Nitrogen

Veri-Green Lawn Food Weed & Feed

Kills over 250 broadleaf weeds
 Kills dandelions, clover, chickweed,
 oxalis, and purslane
 Feeds the lawn (21-0-3)

Coverage (sq. ft.)	JG SKU	Weight (lbs)	Case Pack	Bags per Pallet	MSRP
5,000	16002	15	na	130	\$29.99
15,000	16003	45	na	45	\$74.99

Dissolve® is a registered trademark of NuFarm Americas, Inc.



Derived from:
 Polymer Coated Urea
 Urea, Muriate of Potash
 Ferrous Sulfate
 25% Slow-Release Nitrogen

Winter Survival Fall Lawn Food

Helps encourage fall rooting and winter
 disease prevention
 Provides a gentle fall feeding
 Feeds the lawn (10-0-20)

Coverage (sq. ft.)	JG SKU	Weight (lbs)	Case Pack	Bags per Pallet	MSRP
5,000	12400	15	na	130	\$24.99
15,000	12414	45	na	45	\$59.99

Lawn Foods and annual program

Veri-Green Lawn Food

Quick greening formula

Contains iron for maximum greening

Feeds the lawn (29-0-3)

Coverage (sq. ft.)	JG SKU	Weight (lbs)	Case Pack	Bags per Pallet	MSRP
5,000	16004	15	na	130	\$23.99
15,000	16005	45	na	45	\$59.99



Derived from:
Polymer Coated Urea,
Urea, Muriate of Potash
Ferrous Sulfate
40% Slow-Release Nitrogen

Veri-Green Lawn Food For Seeding & Sodding

Helps newly planted seed or sod develop deep and dense roots

Feeds the lawn (12-18-8)

Coverage (sq. ft.)	JG SKU	Weight (lbs)	Case Pack	Bags per Pallet	MSRP
1,500	16006	4.5	12	35	\$12.99
5,000	16007	15	na	130	\$27.99
15,000	16008	45	na	45	\$64.99



Derived from:
Polymer Coated Urea,
Urea, Muriate of Potash
Ammoniated Phosphate
25% Slow-Release Nitrogen

Summer Survival Insect Control with Lawn Food

Gently feeds the lawn without burning during the summer

Kills surface feeding insects that damage grass leaves

Feeds the lawn (13-0-3)

Coverage (sq. ft.)	JG SKU	Weight (lbs)	Case Pack	Bags per Pallet	MSRP
5,000	12011	16.65	na	130	\$26.99
15,000	12015	49.95	na	45	\$63.99



Contains Bifenthrin insecticide
Derived from: Polymer Coated Sulfur Coated Urea,
Urea, Muriate of Potash
40% Slow-Release Nitrogen



Watch our
Weed Control
Video

Annual Lawn & Soil Program

1. Veri-Green with Crabgrass Preventer
2. Veri-Green with Weed & Feed
3. Mag-I-Cal Plus
4. Winter Survival

The only annual lawn care program that greens the lawn, kills weeds and improves the soil.

Coverage (sq. ft.)	MSRP
5,000	\$99.95
15,000	\$249.95



Organic Collection

- » Safe for children and pets.
- » Will not burn lawns.
- » Complex food-grade ingredients that contain no manures.

» LOVE!!

★★★★★ Review by Jessica

'It is now November and I've used Jonathan Green's Organic lawn food twice this year. My lawn was never the best, in fact it was the worst. Now my lawn is by far, the greenest on the block, and it is really lush. I live across from neighbors who pride themselves on their lawn and their Scotts products, but now their lawn looks dried up, scarce and yellow-green. So blown away! I'm a fan for life.'





10% Total N
 9% Water Insoluble Nitrogen
 2% K2O
 1% Calcium
 1% Sulfur
 1% Iron

Organic Lawn Food 100% Homogenous Granules

A complex, all organic lawn fertilizer
 Ecofriendly formula – great for lake and bay communities
 Feeds the lawn in spring-summer-fall (10-0-1)

Coverage (sq. ft.)	JG SKU	Weight (lbs)	Case Pack	Bags per Pallet	MSRP
5,000	10250	15.5	na	96	\$36.99
15,000	10251	46.5	na	40	\$84.99



10% Total N
 3.5% Water Insoluble Nitrogen
 6.5% Other Water Soluble N
 2% Soluble K2O
 Derived from: Corn Gluten Meal, Urea

Corn Gluten Weed Preventer plus Lawn Food

Safe for kids and pets
 Prevents crabgrass, dandelions and over 25 other weeds
 Feeds the lawn (10-0-2)

Coverage (sq. ft.)	JG SKU	Weight (lbs)	Case Pack	Bags per Pallet	MSRP
5,000	11591	15	na	104	\$39.99



2% Thyme Oil
 0.6% 2-Phenethyl propionate

Natural Grub and Insect Control

Controls grubs and surface-feeding insects organically
 Insects include ants, chinch bugs, and fleas
 Contains plant oils

Coverage (sq. ft.)	JG SKU	Weight (lbs)	Case Pack	Bags per Pallet	MSRP
5,000	11925	10	na	144	\$44.99

Controls Collection



Great Product

★★★★★ Review by John B.

'Jonathan Green Lawn Moss Control works very well. Have a very shaded yard and have had an ongoing moss problem for years. I have used Scotts products with very limited success. I saw this product at my local Ace Hardware and decided to buy one bag to give it a try..I was very impressed. I could actually see it was working the next day. I have since bought 2 more bags. Highly impressed with this product.'

Season-Long Weed Preventer Lawns & Landscapes

Controls or suppresses many annual grasses and broadleaf weeds

Coverage (sq. ft.)	JG SKU	Weight (lbs)	Case Pack	Bags per Pallet	MSRP
5,000	12360	9.5	na	150	\$21.99
15,000	12361	28.5	na	50	\$54.99



Dimension (Dithiopyr)



2,4-D, MCPP, Dicamba

Lawn Weed Control

Improved formula with Trimec® technology provides control of 200+ broadleaf weeds

Use when weeds are actively growing from spring through fall

Coverage (sq. ft.)	JG SKU	Weight (lbs)	Case Pack	Bags per Pallet	MSRP
5,000	12195	10	na	120	\$18.99
15,000	12197	30	na	50	\$45.99



Thiophanate-methyl

Lawn Fungus Control

Controls 20+ diseases

Including summer patch, dollar spot, red thread, brown patch, pink snow mold

Coverage (sq. ft.)	JG SKU	Weight (lbs)	Case Pack	Bags per Pallet	MSRP
5,000	10233	7.5	na	150	\$18.99
15,000	10236	22.5	na	50	\$45.99



Ferrous Sulfate Monohydrate

Lawn Moss Control

Kills lawn moss quickly

50% more active ingredient per bag than leading competitors

Coverage (sq. ft.)	JG SKU	Weight (lbs)	Case Pack	Bags per Pallet	MSRP
5,000	11457	20	na	100	\$21.99

Spreader Collection

- »» For homeowners and landscapers
- »» Pneumatic tires for easy spreading





Deluxe Rotary Spreader

Holds up to 15,000 square feet

Comes 95% assembled

JG SKU	Cases Per Pallet	Units per Case	MSRP
10938	12	1	\$264.99



Standard Rotary Spreader

For easy accurate applications of grass seed and fertilizers

Comes fully assembled

JG SKU	Cases Per Pallet	Units per Case	MSRP
10937	18	3	\$99.99



Hand Spreader

Ideal for grass seed, fertilizers, controls and ice melt

Lighweight, ergonomic handle

Fully assembled

JG SKU	Cases Per Pallet	Units per Case	MSRP
10947	168	6	\$19.99

Fabrics Collection



Landscape Fabric

3 oz

Stop weeds from growing permanently
6-year warranty

JG SKU	Units per Pallet	Units per Case	MSRP
12423	3 x 50'	20/case	\$14.99
12424	3 x 100'	12/case	\$24.99
12443	3 x 300'	each	\$74.99
12445	6 x 300'	each	\$134.99



Professional Landscape Fabric

6 oz

Weed barrier that stops 95% of weed growth

12-year warranty

JG SKU	Units per Pallet	Units per Case	MSRP
12425	3 x 50'	12/case	\$21.99
12426	3 x 100'	6/case	\$39.99
12422	3 x 300'	each	\$119.99
12435	6 x 300'	each	\$229.99



Landscape Staples

Display landscape staples with landscape fabric for easy tie-in sales

Helps secure numerous lawn and garden objects to ground

JG SKU	Units per Pallet	Units per Case	MSRP
10755	na	36x10/bag	\$3.99
10756	na	1000/box	\$69.99

Ice Melt Collection



Sodium Chloride
Calcium Chloride
Potassium Chlorid
Blue dye for accurate spreading

Melt-A-Way Ice Melter

3-way melting action
Effective to +15° F

Coverage (sq. ft.)	JG SKU	Weight (lbs)	Case Pack	Bags per Pallet	MSRP
na	11305	50	na	40	\$24.99



Magnesium Chloride

Magnesium Chloride Pellets

Use on all surfaces for ice melting to -13° F

Coverage (sq. ft.)	JG SKU	Weight (lbs)	Case Pack	Bags per Pallet	MSRP
na	11262	50	na	42	\$32.99



Pure Sodium Chloride

Rock Salt

Effective to +20° F

Coverage (sq. ft.)	JG SKU	Weight (lbs)	Case Pack	Cases per Pallet	MSRP
na	11799	50	na	49	\$13.99





SEED THE LAWN & FEED THE SOIL

Sell the Jonathan Green
difference today

www.jonathangreen.com

Distributors & Co-ops

Ace Hardware	: 630-990-6600	BFG Supply (West)	: 800-624-2517	H.B. Davis Seed Co.	: 518-489-5411
Arett Sales	: 856-751-1224	Do It Best Hardware	: 260-748-5300	Orgill Corp.	: 800-347-2860
Bradley Caldwell, Inc.	: 570-455-7511	Emery-Jensen	: 217-360-9876	Standard Hardware	: 603-424-2141
BFG Supply (East)	: 800-883-0234	Griffin Greenhouses	: 800-888-0054	True Value Hardware	: 800-897-3112

Address

PO Box 326
48 Squankum-Yellowbrook Rd.
Farmingdale, NJ 07727

Phone & Fax

Toll Free : 1-800-526-2303
VP Sales : 646-640-0743
Orders : ext: 209, 211 & 223
Co-Op Ad : ext: 211
Fax : 732-751-2547

Online

Email : support@jonathangreen.com
Marketing : marketing@jonathangreen.com
VP Sales : marlotta@jonathangreen.com
Facebook : [/JonathanGreenInc/](https://www.facebook.com/JonathanGreenInc/)
Instagram : [/jonathangreen_lawn/](https://www.instagram.com/jonathangreen_lawn/)